

# Cascading Style Sheets

## Using Dreamweaver MX

---

### In this lesson you will:

- Create an external style sheet
- Add styles to an existing style sheet
- Edit a style
- Create a custom style
- Link to an external style sheet
- Create an embedded style
- Convert embedded styles to external styles
- Convert CSS to HTML

### Introduction

**Cascading Style sheets (CSS)** enable you to define how type is displayed on your Web pages. The term '**cascading**' refers to the ordered sequence of styles. A **style** is a group of formatting attributes, identified by a single name. Styles in HTML documents give you a great deal of control over text formatting. The advantage of using styles is that when you make a change to an attribute of the style, all of the text controlled by that style will be reformatted automatically. You can make adjustments on a wide variety of settings from standard HTML attributes such as font, size, color, and alignment to unique attributes such as the space between characters (tracking), the space between lines (leading), and additional size and font options.

You can use **embedded style** - one that is stored inside the document - when you need to format a single page; or you can use an **external style sheet** - one that is stored outside of the document and linked to the current page - when you need to control several documents at once in order to keep the same style of text formatting on multiple pages. It is ideal to keep the treatment of text consistent throughout your site because changes in appearance may give viewers the impression they have landed on another site.

**NOTE:** Cascading Style Sheets can be one of the most difficult Web design concepts to grasp. As you read the following pages, resist the temptation to fling your monitor into the hallway until after you've followed the exercises, which should help to put all of this tech-talk into context.

### Why Use CSS

Although HTML alone provides basic formatting options, for text, images, tables, and other Web page elements, Cascading Style Sheets have many advantages that make it a superior choice for many formatting tasks. In fact, the World Wide Web Consortium (W3C), the organization responsible for defining standards for the Web, plans to phase out (deprecate) the <font> tag in future versions of HTML in favor of CSS. In other words, upcoming browsers may not even understand much of the text formatting you apply with the Property Inspector. But they will understand CSS.

But even if the threat of obsolescence doesn't motivate you to use CSS, consider this: Style sheets offer far more formatting choices than HTML. With CSS, you can format paragraphs as they appear in a book or newspaper (the first line indented and no space between each paragraph, for example) and control the leading (the space between lines of type in a paragraph).

---

Even better, CSS styles take much less space than HTML's <font> tag formatting. You can usually trim a lot of kilobytes from text-heavy Web pages using CSS while maintaining a high level of formatting control. As a result, your pages look great and load faster.

## Why Not Use CSS

Cascading Style Sheets may sound like a cure-all for HTML's anemic formatting powers, but you may pay a price for their convenience. The first consideration is compatibility. Although the CSS standard has been around for some time, not all Web browsers understand style sheets. And among those that do, some still don't always display the style properties correctly. (Netscape Navigator 4 is the main culprit here). The bottom line is to test your pages that use CSS on various browsers and various computers.

## Internal vs. External Style Sheets

As you create new styles and add them to style sheets, you can then store these style sheets either internally, in the Web page itself, or in another file called an **external style sheet**.

Internal style sheets appear in the <head> portion of a Web page and contain styles that apply to that page. An internal style sheet is a good choice when you have a very specific formatting task for a single page; perhaps you want to create styles to format the text and table of a chart that appears only on a single page.

An external style sheet, on the other hand, contains only style – no HTML – and can be linked to numerous pages. You can create a single style sheet that affects many pages of your site, creating uniform formatting throughout. For instance, you can put a headline style in an external style sheet and link that sheet to every page in the site. Every headline on the site will then share the same look – instant design consistency! Even better, when you decide to change the color of the headlines you only need to edit a single file – the external style sheet – to update all the web pages at once.

You can create both types of styles sheets easily in Dreamweaver, and you aren't limited to choosing one or the other; a single web page can have both an external style sheet (for styles that apply to the whole site) and an internal style sheet (for page specific formatting). You can even attach multiple external style sheets to a single page.

## Types of Styles

Styles come in several different flavors. The two most common are **custom styles** and **redefined HTML tags**.

A **custom style** is one that you create, name, and attach manually to text or an HTML tag. Custom styles work the most like styles in word processing and page layout programs. For example, if you want the name of your company to be displayed in bold and red wherever it appears in the text of a Web page, you can create a custom style named Company with boldface and red text color formatting. You would then select your company's name on the page and apply this style.

The other major type of CSS style is called an **HTML tag style** and applies globally to HTML tags, as opposed to individual selections. For example, suppose you wanted to display every Heading 1 paragraph in the Arial font. Instead of creating a custom style and applying it to every Heading 1 on the page, you could create a HTML tag style for the <h1> tag. In effect, you redefine the tag so that it's displayed in Arial. The main benefit of redefining an HTML tag in this way is that you don't have to apply the style by hand. Since the new style says that all <h1> tags must use Arial, wherever a Web browser encounters a <h1> tag, it displays the text in Arial, the specified font.

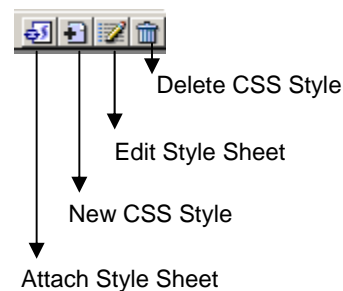
These HTML tag styles are the easiest way to format a page. For one thing, there's no need to select the tag and apply the style; the page only needs to contain an instance of the tag - <h1> for example – that you have redefined.

Nevertheless, there are times when only a custom style will do, such as when you want to apply different styles to various paragraphs on the same page. Simply redefining the <p> tag won't do the trick; that would affect **all** paragraphs. Instead, you'd have to create a custom style for each paragraph format, and then apply the styles by hand.

**NOTE:** You will encounter alternate terms for Custom and HTML tag styles. In the official terminology of Cascading Style Sheets, custom styles are actually called **classes**, and HTML tag styles are **type selectors**. Dreamweaver chooses to use the custom style and HTML tag style because they are more descriptive.

## Creating Styles

You start most CSS-related tasks in the CSS Styles panel, which is the command center for creating and using styles. To open it, choose **Windows > CSS Styles**.



### Phase 1: Set up the CSS Type

To create a new style, click the **New Style** button on the CSS Styles Panel.

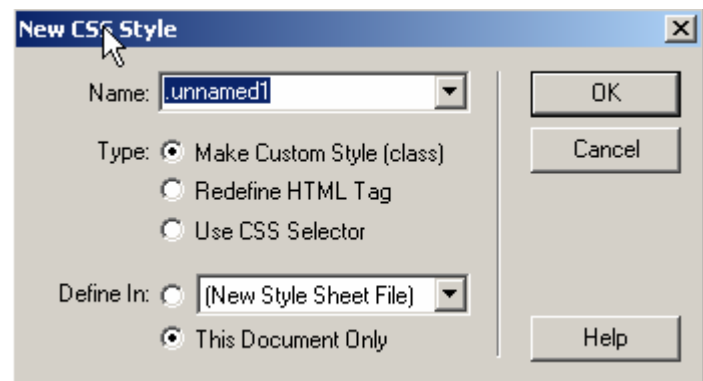
The New Style dialog box appears when you begin the process of creating your new style:

**Type:** Click the appropriate radio button for the kind of style you're creating:

**Make Custom Style** – to create your own style from scratch

**Redefine HTML Tag** – to create an HTML tag style that Dreamweaver will automatically apply to each occurrence of the tag.

**Use CSS Selector** – to create a style for one of the four **pseudo-classes** Dreamweaver supports or for any valid CSS Selector.



**Name:** If you clicked the **Make Custom Style** button, type a name for the new style, to replace Dreamweaver's bland default name (.unnamed1). All custom styles begin with a period; this is a standard Cascading Style Sheet convention. Custom style names must begin with a letter, too and can only contain letters and numbers.

If you click the **Redefine HTML tag** instead, select the HTML tag you want to redefine from the Tag pop-up menu (which appears when you click the Redefine HTML Tag button).

If you click the **Use CSS Selector** button, Dreamweaver lets you select one of the four CSS pseudo-classes from the menu: a:active, a:visited, a:link, or a:hover. The first three refer to the states that links can be formatted, or how it looks at different states. The last one a:hover describes

---

the look of the link as the mouse moves over it. This last option works like a rollover image, but for text. The problem is that Netscape does not recognize the `a:hover` style. To use these pseudo-classes, select each in this order: `a:link`, `a:visited`, `a:hover`, and `a:active`.

When you choose the CSS Selector option, you aren't actually choosing a third type of style. You're entering the world of CSS selectors where you can access even more advanced style types. A CSS Selector is simply the instruction that tells a Web browser *what* it should apply the CSS formatting rules to. In fact, HTML tag styles and custom styles, are types of selectors. But there are other, more advanced selectors. For example, an ID selector (which always begins with # symbol like this: `#menu1`) lets you create a style that identifies one element on the page. Most people apply it to an object that's controlled by a JavaScript.

A **contextual selector** is yet another type of CSS Selector. Contextual selectors let you create a 'smart' style that applies only in certain contexts. For example, you could give a special design to the `<b>` tag, but only when it appears inside a bulleted `<ul>` list. In this case, the selector would be a combination of the two tags; you would type **ul b** into the Selector box.

Clearly, CSS selectors can add plenty of power, but also staggering complexity, and their full implementation is beyond the scope of this class.

**Define In:** Click **This Document Only**, if you want the styles to apply only to the current Web page (that is, an **internal style sheet**). To create a new **external style sheet**, choose **New Style Sheet File** from the Define In pop-up menu. This option not only creates a new external CSS file, but adds the necessary code in the current document to link to that file.

**TIP:** If you create a bunch of internal styles in a particular page, and later realize you'd like to turn them into an external style sheet that you can use in other pages, you're in luck. Dreamweaver has a command for this task. Open the page containing the internal styles you want to reuse and choose **File > Export > Export CSS Styles**. A dialog box opens, letting you save the file as an external style sheet.

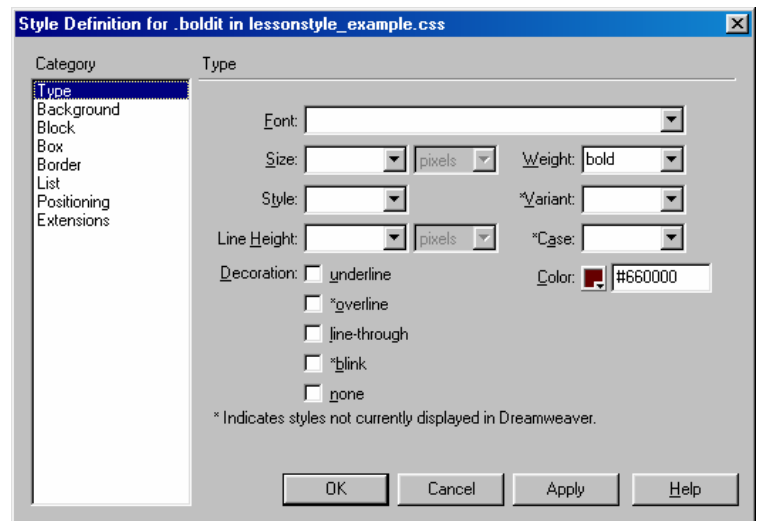
## Phase 2: Defining the Style

The Style Definition window provides access to all the formatting options available to you.

There are a dizzying array of style definitions to choose from. Once you've defined the style click OK.

Dreamweaver adds the style to the specified style sheet, and, if it's a custom style, makes it appear in the CSS panel.

The **real trick** to creating a style is mastering all of the different properties available, such as borders, margins, and background colors, and **then** learning which ones work reliably in the different browsers.



---

## Style sheets: Embedded or External

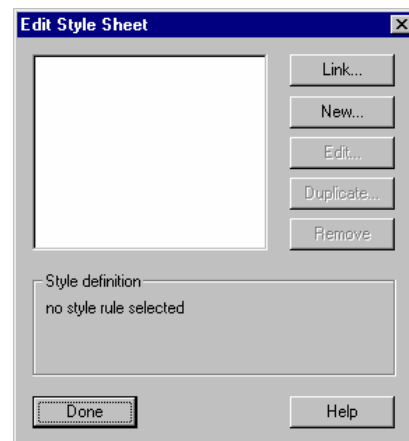
A style sheet is simply a collection of CSS styles (formatting rules). Style sheets do not appear in the CSS Styles panel, but some styles defined within them do. Style sheets are accessed using the **Edit Style Sheet** dialog box:

The Edit Style Sheet Dialog box can be confusing; it displays the internal styles defined in the embedded style sheet but displays only the names of external style sheets, (not the styles within them). External style sheets are indicated in the dialog box by the word 'link' or 'import' after their names. If you highlight the name of an external style sheet in the list, however, the lower portion of the dialog box shows the styles defined within it.

HTML document. For now, just recognize that any CSS styles stored within an HTML document are collectively referred to as an embedded style sheet. The name is really a misnomer; there is no separate 'sheet,' just an HTML document with extra stuff in it (there can only be one embedded style sheet per HTML document).

Because the embedded style sheet doesn't have a separate name (remember, it's contained in the same .html file as your HTML code) Dreamweaver displays its individual styles in the Edit Style Sheet dialog box. Embedded style sheets cannot be shared by multiple documents. Therefore, use external style sheets to hold styles that you expect to use with multiple web pages. To create an external style sheet from existing embedded styles, use **Text > CSS Styles > Export CSS Styles**.

Also note that an HTML document can contain an embedded style sheet and also include links to one or more external style sheets.



**External Style sheets** – An external style sheet is a collection of CSS styles stored in a separate external .css file. (not an HTML file). You can link to an existing external style sheet using the **Link button** in the **Edit Style Sheet** dialog box.

You will notice that there are two ways to link to an external style sheet using this dialog box's Add As option. Selecting the Link radio button causes Dreamweaver to use a <link> tag to point to the external style sheet you have chosen, such as:

```
<link rel="stylesheet" href="pswiss.css" type="text/css">
```

Selecting the **Import** radio button does not copy the external sheet's styles to your embedded style sheet; instead it causes Dreamweaver to use the @import directive instead of the <link> tag to reference your external style sheets.

You will ordinarily use the <link> alternative. In fact, using **Text > CSS Styles > Attach Style Sheet** bypasses the link **External Style Sheet** dialog box entirely and assumes you want to use <link>.

You should store .css files closest to where they'll be need. If used in a limited section of your site, you may store them in a subfolder near the related .html files. If used for your entire site, consider storing them in a folder named CSS within the site's root folder.

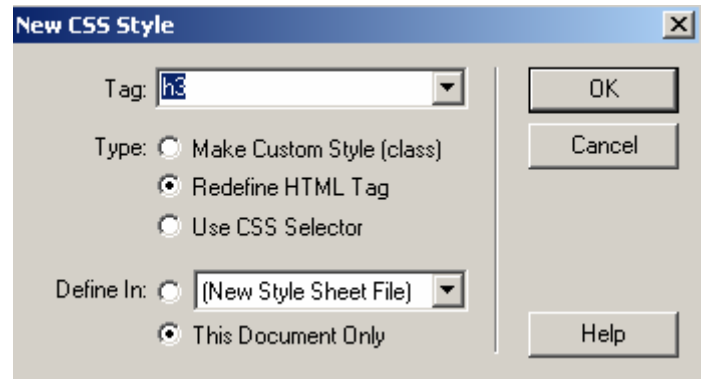


---

## Creating External Style sheets

In this exercise, you will create a new style in an external style sheet by redefining an HTML tag. By redefining the heading 3 <h3> HTML tag in this exercise, you are telling the browser that any text using the <h3> tag should be displayed with the formatting you specify.

1. Open the **about.html** file. The document contains paragraphs, headings, and a definition list.
2. Place the insertion point within the **Compass Adventure Tours** heading. Look at the tag selector at the bottom left of the document window. You'll see the HTML tag **<h3>** that has been applied to the heading. The redefinition of the **<h3>** tag will be the first style you create.
3. Choose **Window > CSS Styles** to open the CSS Styles panel.
4. Click the **New Style** button at the bottom of the CSS Styles panel. The New Style dialog box opens.
5. In the **Type** area, select **Redefine HTML Tag**.  
Since your insertion point was within the heading when you clicked the new style button, the **h3** tag is automatically selected and shown in the Tag selection box.
6. In the **Define In** area, select **New Style Sheet** from the drop-down menu and click **OK**.



7. When the **Save Style Sheet File As** dialog box appears, type **lessonstyle.css** in the **Name** box and click **Save**.  
This creates the external style sheet file and opens the **Style Definition dialog box** for the selected **h3** tag. In the Style Definition dialog box, you define the way you want your heading 3 tag to appear. The options you want to select for the next step are located in the **Type** category.
8. Select the **Type** category in the category list on the left side of the dialog box.
9. Select **Arial, Helvetica, sans-serif** from the **Font** drop-down menu. Select **14** from the first **Size** drop-down menu and change the measurement to **points** in the second **Size** drop-down menu.
10. Select a **medium blue** for the color by clicking in the color box, and using the eyedropper tool.
11. Click **OK**. The changes you have made are now reflected in the first heading on your page.
12. **Save** the file.

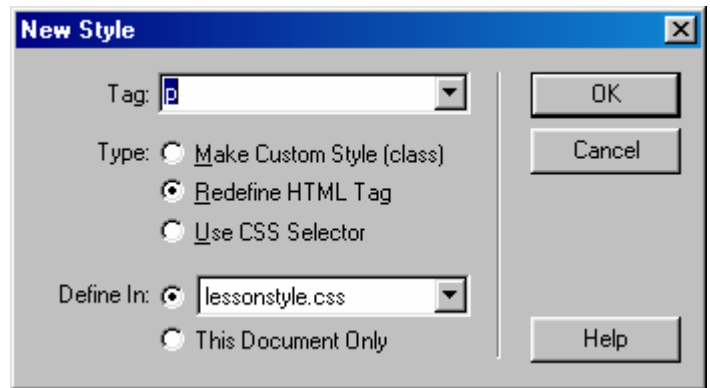
## Adding a Style to an Existing External Style Sheet

When you create an external style sheet for a page, it is attached (linked) to that page. You can add new styles to make changes to not only this page but to all pages that use the style sheet.

1. In the **about.html** document, place the insertion point within the first paragraph below the heading **Compass Adventure Tours**. You will create a style for all paragraphs on the page.
2. Click **New Style** on the **CSS Styles Panel**. The New Style dialog box appears.
3. Select **Redefine HTML Tag** from the **Type** area.

Since your first insertion point was within the paragraph, the **<p>** tag is automatically selected and shown as **p** in the Tag text box. The **<p>** tag represents paragraph.

4. In the **Define In** area, choose **.lessonstyles.css** from the drop-down menu, and click **OK**.
5. Select **Verdana, Arial, Helvetica, sans-serif** from the **Font** drop-down menu. Select **10** from the **Size** drop-down menu and change the measurement to **points**.
6. Type **16** in the **Line Height** text box and change the measurement to **points**.
7. Choose a **dark blue** from the color box and click **OK**.




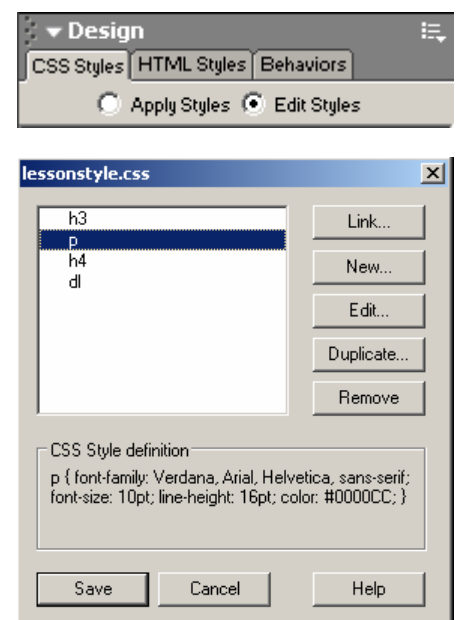
Any text that is contained within paragraph tags in the document appears with the formatting you defined in the **external style sheet**.

8. Select the subheading **'Our Guides'** and **repeat steps 3 through 5** to apply a style with format attributes of your choice for that heading.
9. Place the insertion point in the first line of the definition list **'Jacob Brown - River Guide.'**
10. In the tag selector, click **<dl>**. This selects the definition list tag that controls the HTML formatting of the text. By selecting the **<dl>** tag, you will apply formatting to both the definition term **<dt>** and the definition data **<dd>** at the same time. You also avoid a browser difference between Netscape 4.0 and Internet Explorer 4.0. Netscape 4.0 (and later) does not display style formatting if you create separate styles for the **<dt>** and the **<dd>** tags. Formatting the **<dl>** tag works in both browsers.
11. Use the above steps to apply a style for the **<dl>** tag with format attributes of your choice.
12. **Save** your work.

## Editing an Existing Style

You may need to modify the styles that are in an existing style sheet. Editing an external style sheet will affect all documents that are linked to it. This is useful because the appearance of text can be changed in several pages or an entire site by editing only the external style sheet.

1. Click the **Edit Styles** radio button in the **CSS Styles Panel**. Then click the **Edit Style Sheet icon**  at the bottom of the **CSS Styles Panel**.
2. The **Edit Style Sheet** dialog box opens
3. Select the external style sheet **lessonstyles.css** from the list and click **Edit**.  
The dialog box appears with a list of all the styles contained in this external style sheet. In this case, all the styles are redefined HTML tags.
4. Select **p** from the list to edit the paragraph tag and click **Edit**. The attributes of that style are displayed in the **Style Definition** area of the **lessonstyles.css** dialog box.




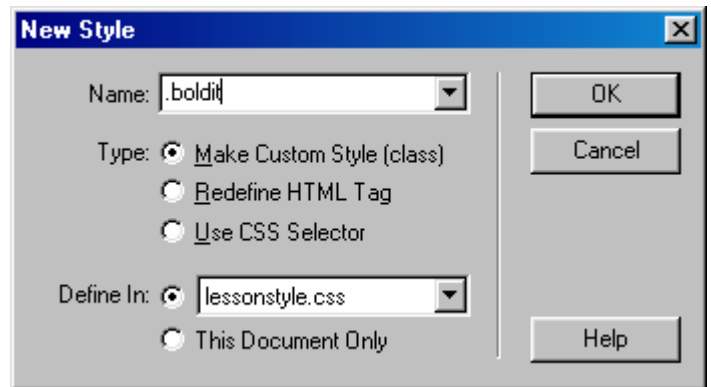
5. In the **Style Definition** dialog box, change the size from 10 points to **11 points** by **typing 11** in the Size text box.
6. Change the **Line Height to 18**. Click **OK** in the Style Definition dialog box. click **Save**.
7. Then click **Save** in the **Edit Style Sheet** dialog box.
8. **Save** your work.

Your changes are applied to the document. The font size is now slightly larger, and the space between each line of text is greater. This style sheet is not yet linked to any other documents; if other documents were linked to this style sheet, any text in those documents using the <p> tag would be formatted according to the modifications you just made.

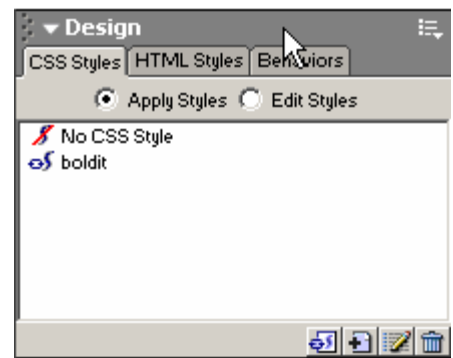
## Creating Custom Styles

Custom styles give you more specific control over the formatting of your document. You apply custom styles the same way you apply styles in a word processor: by selecting the text and then applying the style. You can apply the style to blocks of text or to individual words within the text. When you create a custom style, you do not have to preselect tags. You only select the text in order to apply the style to it, after the style has been created. Custom styles can be created in either external or internal style sheets.

1. In the **about.html** document, click **New Styles** button . The New Style dialog box appears.
2. Select **Make Custom Style** from the **Type** area. The text box that displayed tags in the previous exercises now becomes a **Name** text box for creating a custom style. Dreamweaver assigns generic names automatically in numeric order. This is not very descriptive, and they can be especially unhelpful when you create multiple custom styles. It is best to get in the habit of giving your styles short, descriptive names.
3. Type **.boldit** in the Name text box for the name of your custom style. A period before the name is required.
4. The **Define In** area should still show **.lessonstyle.css**. Click the OK button
5. Change **Weight** to **bold** and pick a **dark red** color from the Color drop-down menu. Then click OK.



- You'll see the custom style you just created displayed on the CSS Styles panel. Only custom styles are displayed in this panel because they are the only styles for which you can select text in the document window and apply a style.
6. Select **Jacob Brown's** name and click the **boldit custom style** on the **CSS Style Panel**.
  7. If necessary, click the **Apply Styles** radio button.



---

The selected text changes to reflect the boldit style. There are now two styles affecting this text; the first style applied which redefines the <dl> (definition list) tag, and the custom style – the second style applied – which specifies bold and color formatting. When you apply more than one style to the same text, those styles might conflict and produce unexpected results. Browsers apply style attributes according to the order in which styles are applied and the following rules.

## **The Rules**

**RULE #1** - CSS is applied in an ordered sequence. When two or more styles are applied to the same text, the browser will display the attributes of each style in combination with each other.

**RULE#2** – If there is more than one style applied to the same text with conflicting attributes, the browser uses the specifications from the innermost style (the style closest to the text itself). The most recent styles are nested inside earlier styles. Since the last formatting attributes you apply are physically the closest tags to the text, they take precedence over earlier styles and control the final look of the text. The order of styles is as follows:

External styles (this is the style that is farthest away from the text).

Embedded styles (sometimes known as internal styles).

Custom styles applied to text on the page.

Local formatting, such as bold or italics, applied to text on the page from the property inspector (that is the style that is closet to the text).

**RULE #3** – If you have an external style sheet containing redefined HTML tags linked to your document, those styles are applied across your document. Suppose, for example, the external style sheet has definitions for heading 3 and heading 4, and that you’ve also created an embedded style within your document that redefines the heading 3 tag. The embedded style takes precedence if the attributes conflict with those in the external style.

**RULE #4** – Text formatting applied manually to ranges of text can also take precedence over styles. Suppose, in the example just presented, that you’ve used the property inspector to apply a different color on one of the heading 3 lines. That is local formatting, and it overrides other styles if they specify color as well. However, the attributes from custom styles overrule attributes from HTML tag styles. To make sure that your styles control the formatting for a paragraph, you may need to remove all other formatting settings if they conflict.

Repeat step 6 for the remaining guide names in the list. Note that the text inherits additional font formatting from the style you defined previously for the paragraph.

Save the document.


**NOTE:** After you apply a custom style, you might want to remove the style. If you apply the custom style to the entire paragraph, make sure the insertion point is in the paragraph, and then click None on the CSS Styles Panel. The style and its formatting are removed. If you’re removing the custom style that has only been applied to selected text within a paragraph, make sure the insertion point is within a word that uses the custom style, and then click None on the CSS Styles panel.

---

## Creating CSS Selector Styles for Links

CSS Selector styles enable you to format combinations of tags – tags that appear within other tags. In this exercise, for example, you want to give text paragraphs within a table a different format than other paragraphs on the page. Since you already created a style for the <p> tag, the paragraphs within the table currently reflect that formatting. Place the cursor in a paragraph within the table, and you will see by looking at the HTML code that there are <td> tags for the table cell and <p> tags for the paragraphs within the cell. The tag selector at the bottom left of the document window shows you the hierarchy of the code: <body><table><tr><td><p> - body, table, table row, table cell, and paragraph, respectively.


In this exercise, you will create a style that changes only the formatting of the paragraphs within the table cells so they look different from the rest of the paragraphs on the page.

1. In the **about.html** document, click New Style button  on the CSS Styles panel.
2. Select **Use CSS Selector** in the **Type** area and type **td p** in the Selector text box.
3. Select **lessonstyle.css** in the **Define In** area and click OK.
4. Set the font to **Geneva, Arial, Helvetica, san-serif**. Select **10 points** for the Size and **14 points** for the Line Height.
5. From the **color box**, choose a dark green and then click **OK**.  
Your changes are reflected in the text that is located in the table.
6. **Save** your changes and close the file.

Because CSS selector styles allow you to format tags that appear after another tag, the changes you made for the paragraph in the table do not affect the other paragraphs on the page. The text in the table uses a <p> tag, which appears after the <td> tag in the HTML code, so the td p CSS selector style is applied to that text. The paragraphs outside the table, however, do not have a <td> tag that appears before the <p> tag, so that text remains unaffected by the selector style.

## Linking to an Existing External Style Sheet

You now have an external style sheet with several Style Definitions. Because it is external, you can link to this file from other documents. The Style Definitions, except for custom styles, will be applied automatically to all documents that are linked to this style sheet. You will need to manually apply any custom styles to paragraphs or selected text.

1. Open the **biking.html** file.
2. Click the **Attach Style Sheet button**  at the bottom of the CSS Styles panel. The Select Style Sheet File dialog box opens.
3. Locate the **lessonstyles.css file** you created earlier, and click Select. The external style sheet has now been linked to this document. Any tags in the current document are changed to the styles in the external style sheet.
4. Notice that not all the text in biking.html has changed from its default formatting. The document had some HTML tags that were not included in your style sheet. In the following steps, you will edit the external style sheet to add the HTML tags that appear in this new page.
5. Click **Edit Style Sheet** at the bottom of the CSS Styles panel. Add styles with format attributes of your choice for the heading '**Mountain Biking Adventures**' and the **bullet lists** that appear on the page. Use the steps you learned in the *Adding a Style to an Existing Style Sheet* exercise. The text on the page changes as you specify styles for the heading and bullet list.

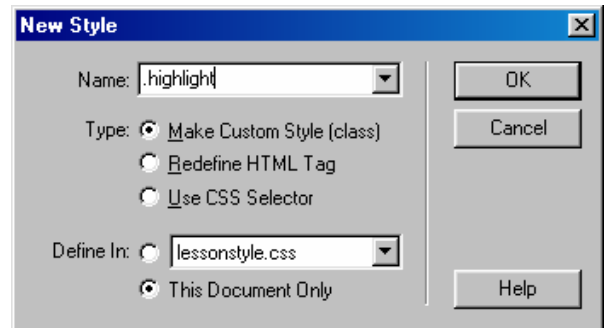
6. Use the steps you learned in the *Creating Custom Styles* exercise earlier to apply the **boldit** custom style to the definition terms, starting with 'Horsethief Bench.'
7. **Save** the file.

## Creating Embedded Styles

Embedded styles are used only in the current document. If you want to create Style Definitions for only one page in your site, you should create an embedded style. If you want your site to have a consistent look, you should use an external style sheet and link that style sheet to each document.

1. In the **biking.html** document, click New Style on the CSS Styles panel. The New Style dialog box opens.
2. Select **This Document Only** in the **Define In** area and change the **Type** to **Make Custom Style (class)**.

The 'This Document Only' specifies that you are adding a new embedded style.



3. Type **.highlight** in the **Name** text box.
4. Click the **OK** button.
5. In the Style Definition box, click **Background** in the Category list on the left. Change the colors in the Background Color field to **pale yellow** and click OK.
6. The highlight custom style you just created appears in the CSS Styles panel. There are now two custom styles: **boldit** and **highlight**. Notice the icon to the left of each name. The custom style in the external style sheet (boldit) has a small link image on the icon to represent the link to the external style sheet.
7. Select **Compass Adventure Travel** on the first line below the **Mountain Biking Adventures** heading at the top of the page and click **highlight** on the CSS Styles panel to apply the style. The text appears to be highlighted with the pale yellow color.
8. Save your file, and open the **about.html** file.
9. Look in the CSS Style panel. You will not see the highlight custom style you just created because it is an embedded style and appears only in the document where it was created.

**NOTE:** To remove embedded or external styles, click the Edit Style Sheet icon on the CSS Styles panel to open the Edit Style Sheet dialog box. Select the style you want to remove and click Remove. If the style is an embedded style, it is deleted from the document. If you remove an external style sheet, the link to the style is removed from the document. The actual external style sheet file is not deleted from your site.

---

## Converting Embedded Styles to External Styles

If you have a document with all embedded styles and you decide you want to use those styles in other pages, you can easily export those styles to an external style sheet.

1. In the **biking.html** document, choose **File > Export > CSS Styles**. The Export Styles as CSS file dialog box opens.
2. Name your style sheet **bikingstyle.css** and click Save. An external style sheet is created from the internal styles in the current document.
3. If you want to use this external style sheet in your current document, first remove all internal styles, and then click the **Attach Style Sheet** button of the CSS Styles panel to link to the external file you just created.

## Converting CSS to HTML

CSS is a great way to control the text throughout your web site, but not all browsers are capable of displaying CSS. Earlier browsers will ignore CSS formatting. If you decide to use CSS, you may want to convert your page to 3.0 browser-compatible files in order to display the page with formatting as close to the CSS styles as possible. You can then use the **Check Browser** behavior to redirect users based on their browser version.

1. In the **about.html** document, choose **File > Convert > 3.0 Browser Compatible**.  
The Convert to 3.0 Browser Compatible dialog box opens.
2. Select **CSS Styles to HTML Markup** and click OK.
3. **Save** the file and **close** it.

The converted file is opened in a new, untitled document and your original file remains unaltered. The styles that were applied in the **about.html** document are reproduced as closely as possible using standard HTML tags. However, it is not possible to convert some types of CSS formatting to HTML tags. For example, line height – also known as leading – has no equivalent in HTML. In other words, there is no way to adjust the spacing between lines of text with the standard HTML formatting attributes. Any attributes that cannot be converted will be discarded.